

Building connections that last™

Sharpe® Series D84

3-Piece Diverter
Ball Valve Datasheet



Design and Features

Body Material

316 Stainless Steel & Carbon Steel

Three-Piece Diverter Design

In-line serviceable swing-out center section allows easy access to internal valve components without disturbing alignment of pipe.

Stem Design

Live-loaded, bottom entry, blowout proof, anti-static stem featuring packing that extends valve cycle life over conventional ball valves and is best choice for actuation.

Stem seals are live-loaded using Belleville springs to provide consistent sealing forces, reducing or eliminating the need for frequent seal adjustment.

Tongue and Groove Design

Fully encapsulated body seals, allowing ends to be welded in-line, without time consuming and labor intensive disassembly.

Design compensates for bolt expansion and reduces the chance of external leakage.

Helps prevent seal ruptures in high pressure, cryogenic or steam applications.

Encapsulated Body Bolts

Heavy duty stainless steel bolting is protected from outside environment assuring valve integrity.

Ideal for wash-downs.

ISO 5211 Integral Mounting Pad

Ideal for actuation.

Centering lip feature assures precise alignment of bracket, stem and coupler.

Actuators may be retrofitted on existing Sharpe® Series D84 without disruption of line integrity.

Allows for secondary containment unit to be added when necessary.

Lockable Handle

All Sharpe® Series D84 valves are supplied with lockable lever or pipe handles.

Traceability

Body and end piece castings are marked with heat codes providing traceability to the chemical analysis and material test reports performed at the foundry. CMTR's (Certified Material Test Reports) are available upon request.

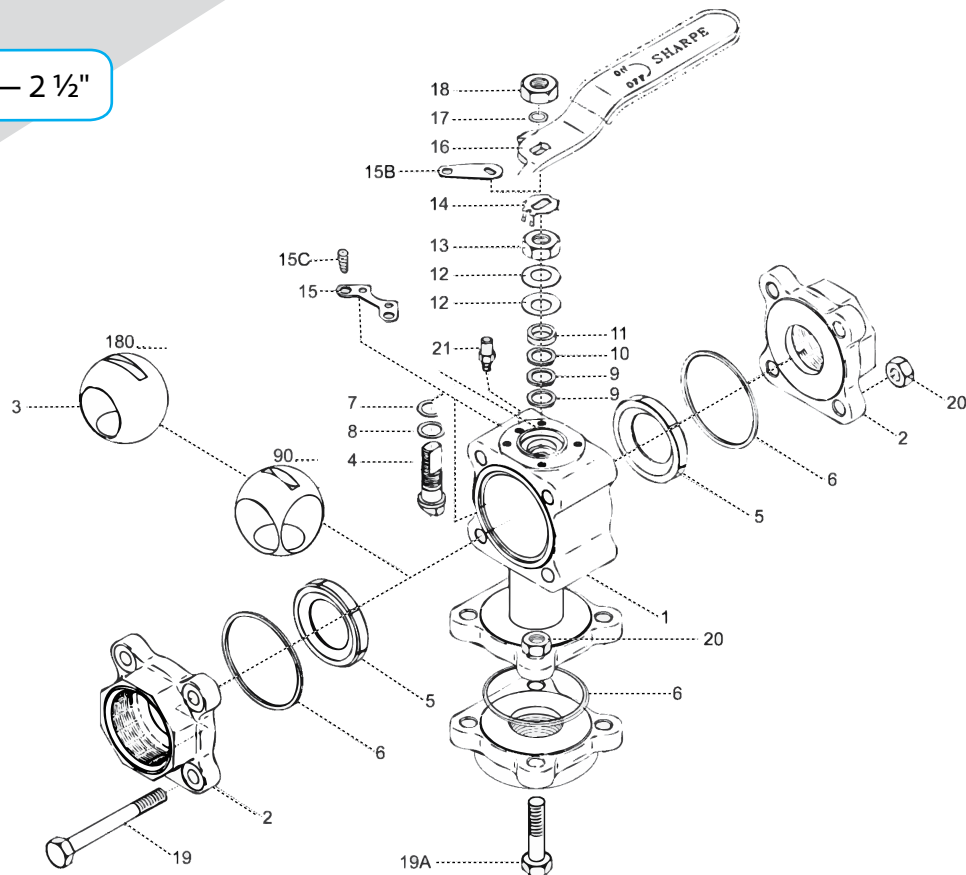


asc-es.com

Building connections that last™

Diverter Ball Valve Sharpe® Series D84

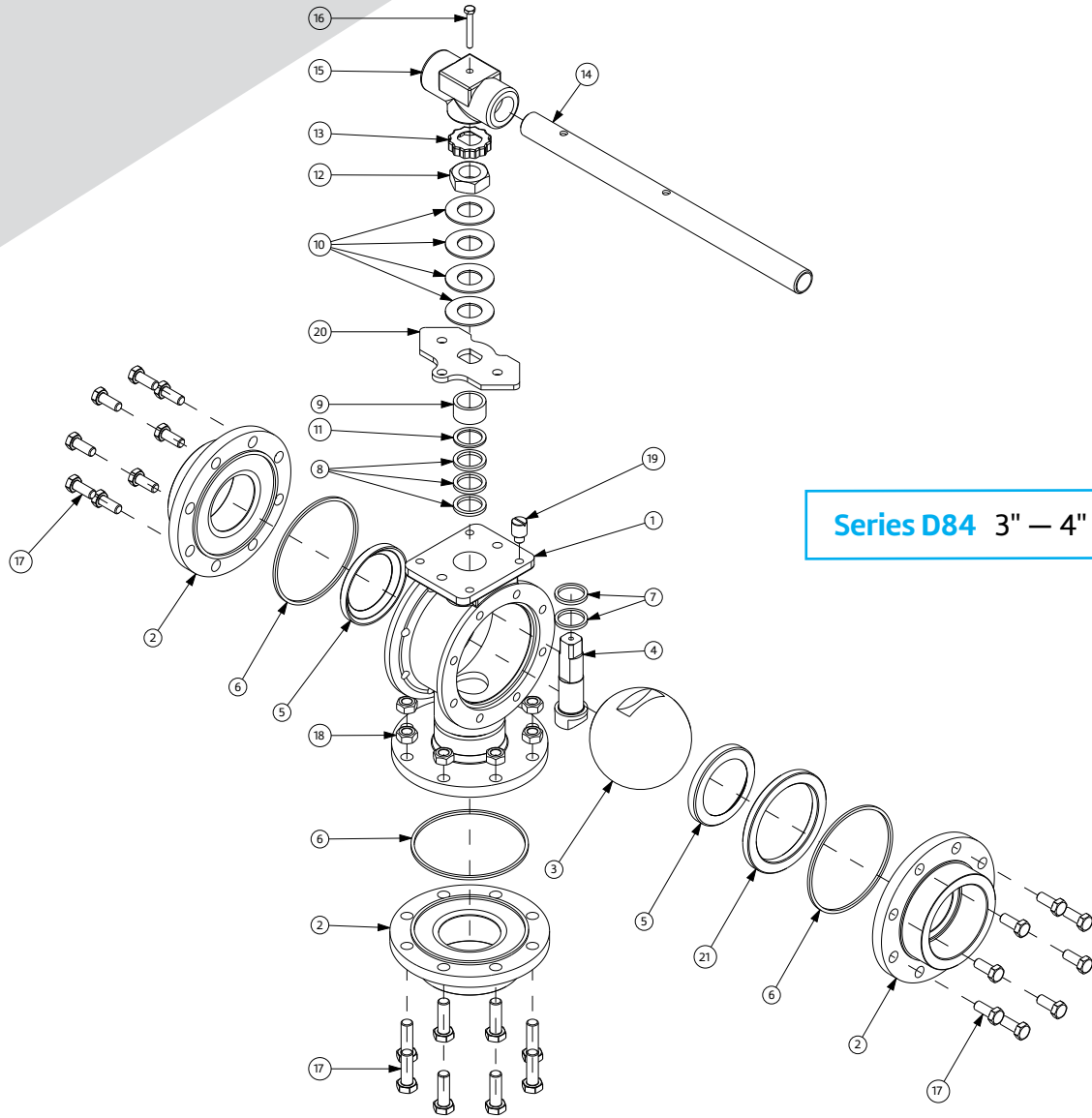
Series D84 ½" – 2 ½"



Parts & Materials (Sizes ½" – 2 ½")

No.	Part Name	Qty.	Material	No.	Part Name	Qty.	Material
1	Body	1	316 Stainless Steel ASTM A351 CF8M	12	Belleville Washer	2 Sets	300 Series Stainless Steel
2	Pipe Ends	3	316 Stainless Steel ASTM A351 CF8M 316L Stainless Steel ASTM A351 CF3M Carbon Steel, ASTM A216 WCB	13	Packing Nut	1	300 Series Stainless Steel
3	Ball	1	316 Stainless Steel	14	Lock Tab	1	300 Series Stainless Steel
4	Stem	1	316 Stainless Steel, 17-4 PH SS	15	Lower Lock Latch	1	300 Series Stainless Steel
5	Valve Seat	2	PTFE, TFM®, UHMWPE RTFE, Nova, PEEK, Delrin®	15B	Upper Lock Latch	1	300 Series Stainless Steel
6	Body Seal	3	PTFE, TFM®, Grafoil, Buna, Neoprene, UHMWPE, EPR, Viton®	15C	Latch Bolt	2	300 Series Stainless Steel
7	Thrust Bearing	1	Nova (UHMWPE with UHMWPE Seats)	16	Handle (¼" - 2")	1	300 Series Stainless Steel
8	Thrust Bearing	1	PEEK (UHMWPE with UHMWPE Seats)	17	Lock Washer	1	300 Series Stainless Steel
9	Stem Packing	2	Nova (UHMWPE with UHMWPE Seats)	18	Handle Nut (¼" - 2")	1	300 Series Stainless Steel
10	Seat Protector	1	PEEK	19	Body Bolts	4	300 Series Stainless Steel
11	Gland	1	300 Series Stainless Steel	19A	Body Connector Bolt	4	300 Series Stainless Steel
				20	Nuts	8	300 Series Stainless Steel
				21	Stop Pin (¼" - ½")	1	300 Series Stainless Steel
						2	300 Series Stainless Steel

Diverter Ball Valve Sharpe® Series D84



Series D84 3" – 4"

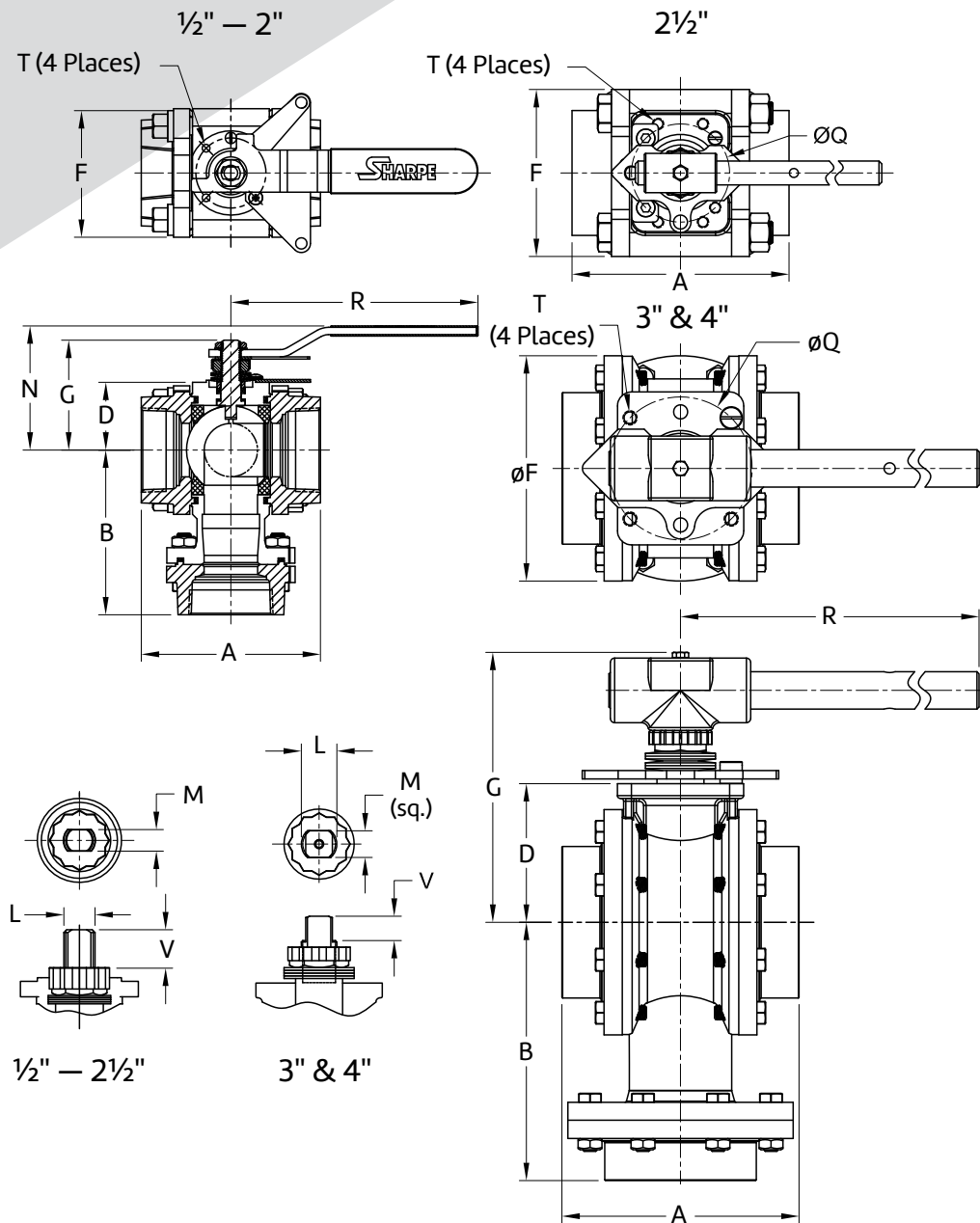
Parts and Materials (Sizes 3" – 4")

No.	Part Name	Qty	Material
1	Body	1	316 Stainless Steel: ASTM A351 CF8M
2	Pipe Ends	3	316 Stainless Steel: ASTM A351 CF8M 316L Stainless Steel: ASTM A351 CF3M Carbon Steel: ASTM A216 WCB
3	Ball	1	316 Stainless Steel
4	Stem	1	316 Stainless Steel, 17-4 PH SS
5	Valve Seat	2	PTFE, TFM®, RTFE, UHMWPE Nova, PEEK, Delrin®
6	Body Seal	3	TFE, TFM®, Grafoil, Buna, Neoprene UHMWPE, EPR, Viton®
7	Thrust Bearing	1	Nova (UHMWPE with UHMWPE Seats)
8	Stem Seal	1	Nova (UHMWPE with UHMWPE Seats)
9	Gland	1	300 Series Stainless Steel

No.	Part Name	Qty	Material
10	Belleville Washer	1	300 Series Stainless Steel
11	Washer	4	300 Series Stainless Steel
12	Stem Nut	1	300 Series Stainless Steel
13	Lock Tab	1	300 Series Stainless Steel
14	Handle	1	Galvanized Steel
15	Wrench Block	1	300 Series Stainless Steel
16	Hex Head Bolt	1	300 Series Stainless Steel
17	Body Bolt	24	300 Series Stainless Steel
18	Nuts	8	300 Series Stainless Steel
19	Stop Pin	1	300 Series Stainless Steel
20	Stopper	1	300 Series Stainless Steel
21	Seat Retainer	1	300 Series Stainless Steel, Carbon Steel

Diverter Ball Valve

Sharpe® Series D84



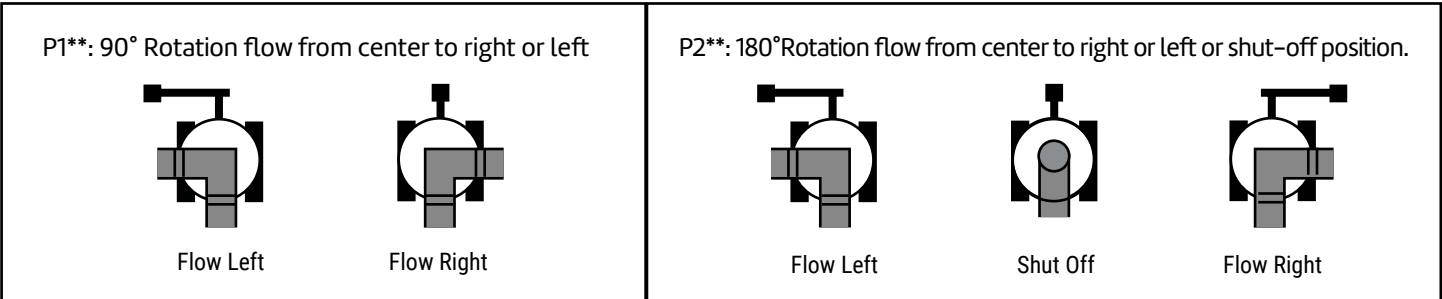
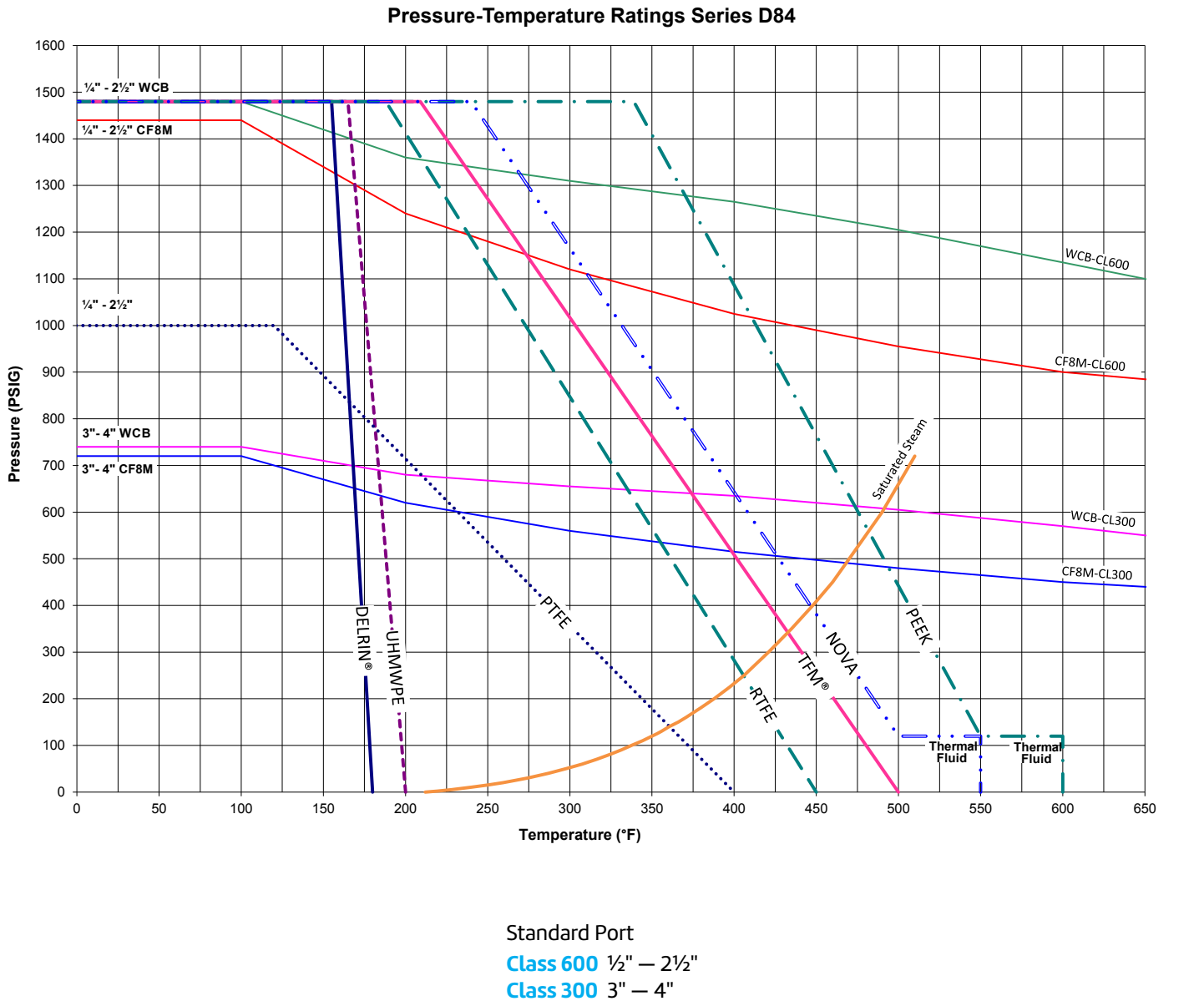
Dimensions

Size	A	B	C	D	F	G	L	M	N	Q	R	T	V
1/2	2.59	2.72	0.98	1.06	1.81	1.66	3 / 8-24	0.220	2.14	1.42 (F03)	4.50	M5x.8	0.26
3/4	2.87	2.87	0.98	1.17	1.95	1.65	3 / 8-24	0.220	2.24	1.42 (F03)	4.50	M5x.8	0.35
1	2.71	3.49	1.18	1.51	2.38	2.23	7 / 16-20	0.300	2.69	1.65 (F04)	5.75	M5x.8	0.47
1-1/2	4.57	4.15	1.38	1.73	3.06	2.90	9 / 16-18	0.350	3.16	1.97 (F05)	6.78	M6x1.0	0.69
2	5.00	4.62	1.38	1.90	3.59	3.09	9 / 16-18	0.350	3.35	1.97 (F05)	6.78	M6x1.0	0.67
2-1/2	5.86	5.86	2.16	2.93	4.68	4.56	M20x2.5	0.551	5.48	2.75 (F07)	8.73	M8x1.25	1.14
3	6.66	7.25	-	3.89	6.46	5.76	1-14	0.748	6.82	4.01 (F10)	13.74	M10x1.5	0.69
4	8.42	8.98	-	4.45	8.11	6.37	1-14	0.748	7.43	4.01 (F10)	13.74	M10x1.5	0.69

Note: The dimensions above are for information only. Please refer to Sharpe® Valves if you need dimensions for construction.

Diverter Ball Valve

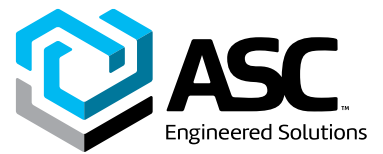
Sharpe® Series D84



Note: **Not to be used as an isolation valve.

Diverter Ball Valve

Sharpe® Series D84



How to order Series D84

Example:

3/4	D84	-	6	6	R	M	TE	TE	P1
Size	Series		Body & End Material	Ball & Stem Material	Seat Material	Seal Material	End Connection (Sides)	End Connection (Bottom)	Flow Plan
Size	Series			Seat Material	End Connection (Side)		Flow Plan		
1/2	D84			T PTFE	TE	Threaded	P1	90° Rotation flow from center to left or right	
3/4				R RTFE	SW	Socket Weld	P2	180° Rotation flow from center to left or right or shut-off position	
1	Body & End Material			M TFM®	BW5	Schedule 5 Butt-weld*			
1-1/2	4	Carbon Steel (ends only)		D Delrin®**	BW10	Schedule 10 Butt-weld*			
2	6	316 Stainless Steel		N Nova	BW40	Schedule 40 Butt-weld			
2-1/2	Ball & Stem Material			P Peek**	BW80	Schedule 80 Butt-weld*			
3	6	316 Stainless Steel		U UHMWPE	End Connection (Bottom)				
4	7	7 17-4 PH SS Stem, 316 SS Ball			TE	Threaded			
				T PTFE	SW	Socket Weld			
				M TFM®	BW5	Schedule 5 Butt-weld*			
				G Grafoil	BW10	Schedule 10 Butt-weld*			
				B Buna	BW40	Schedule 40 Butt-weld			
				N Neoprene	BW80	Schedule 80 Butt-weld*			
				V Viton®					
				U UHMWPE					
				E Ethylene Propylene Rubber (EPR)					

Notes:

*POA.

**Requires 17-4 PH SS stem.

Viton® is a resisted trademark of E.I. DuPont.

Delrin® is a resisted trademark of E.I. DuPont.

TFM® is a registered trademark of Dyleon, LLC.

Responsibility for proper selection, use and maintenance of any product remains solely with the purchaser and end user.

We reserve the right to modify or improve the designs or specifications of any product at any time without notice.



About ASC Engineered Solutions

ASC Engineered Solutions is defined by quality—in its products, services and support. With more than 1,400 employees, the company's portfolio of precision-engineered piping support, valves and connections provides products to more than 4,000 customers across industries, such as mechanical, industrial, fire protection, oil and gas, and commercial and residential construction. Its portfolio of leading brands includes ABZ Valve®, AFCON®, Anvil®, Anvil EPS, Anvil Services, Basic-PSA, Beck®, Catawissa, Cooplet®, FlexHead®, FPPI®, Gruvlok®, J.B. Smith, Merit®, North Alabama Pipe, Quadrant®, SCI®, Sharpe®, SlideLOK®, SPF® and SprinkFLEX®. With headquarters in Commerce, CA, and Exeter, NH, ASC also has ISO 9001:2015 certified production facilities in PA, TN, IL, TX, AL, LA, KS, and RI.



asc-es.com

Building connections that last™

FC-DS-SERIES-D84-v02 20220916

